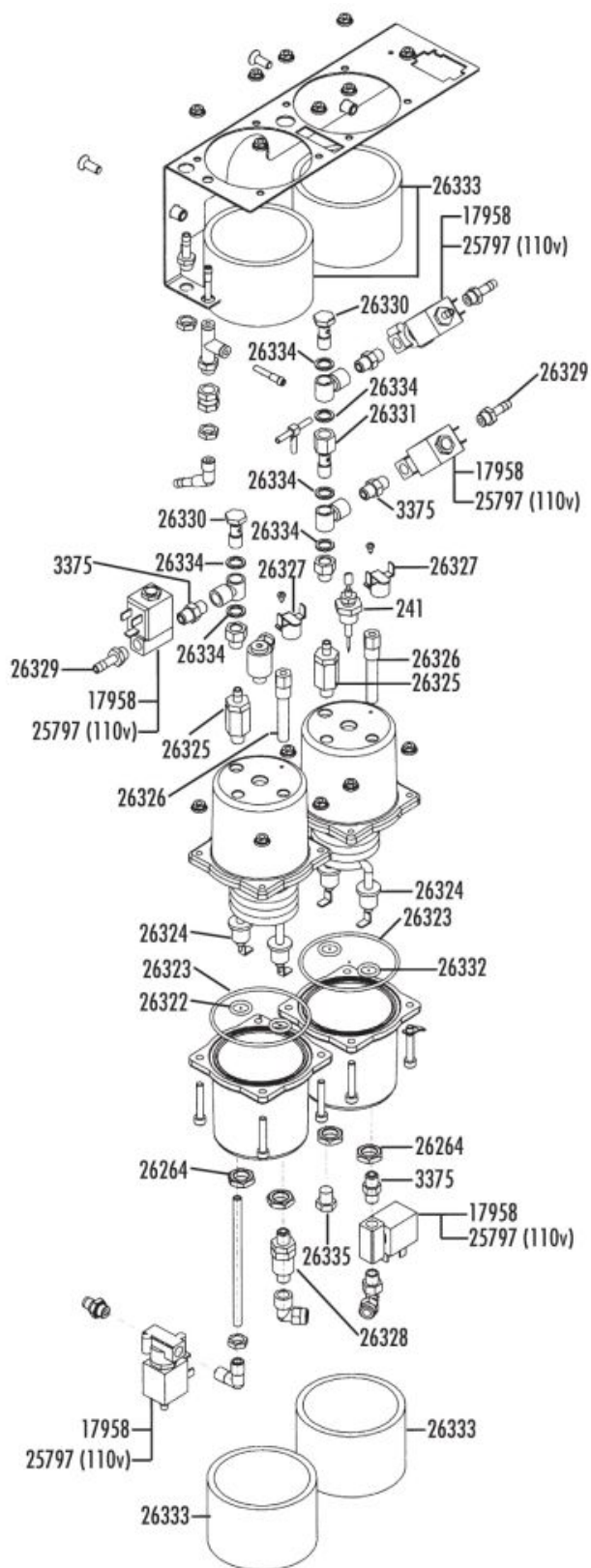
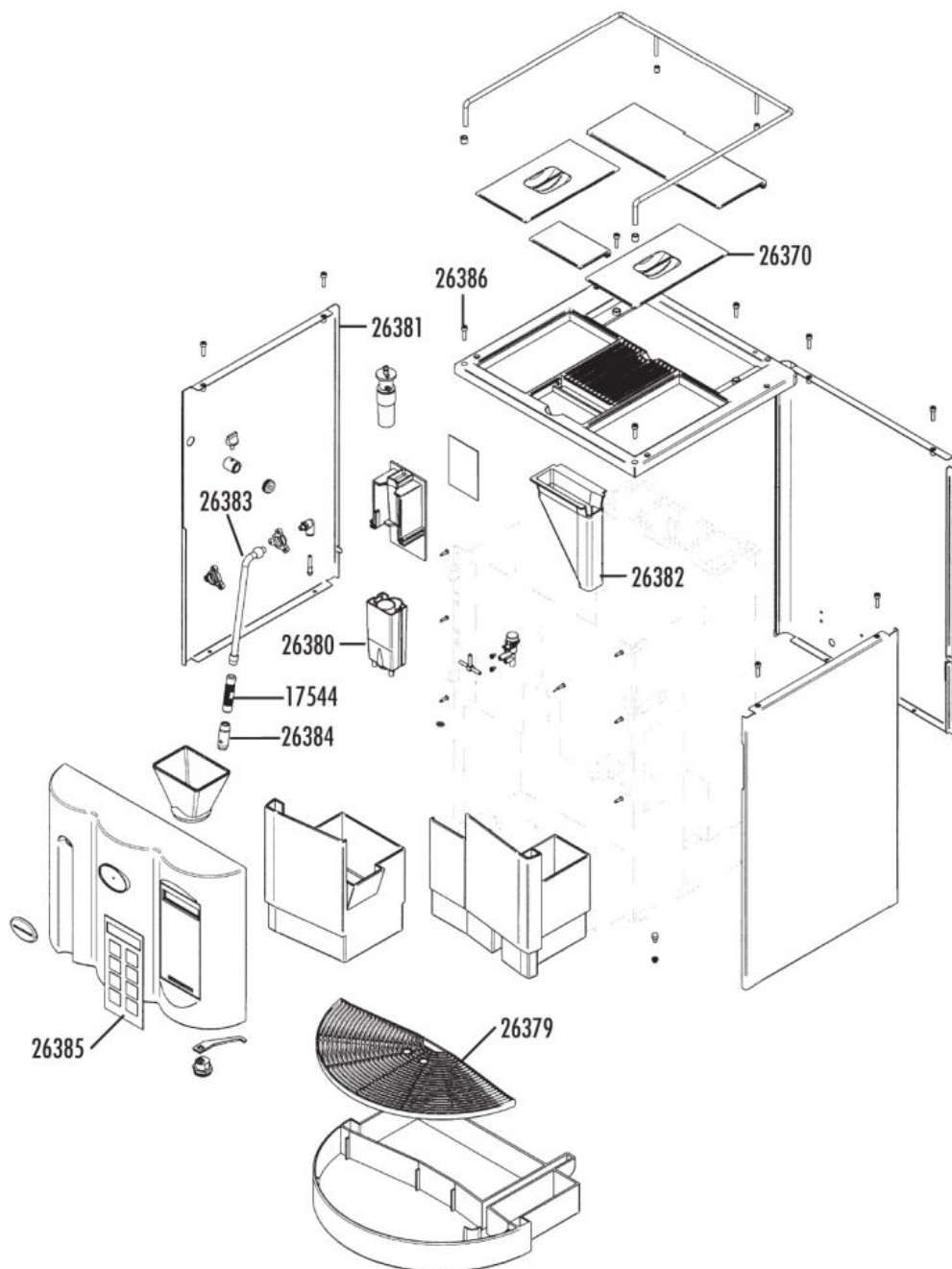


Despiece	Marca
MICROBAR - CALDERA	NUOVA SIMONELLI



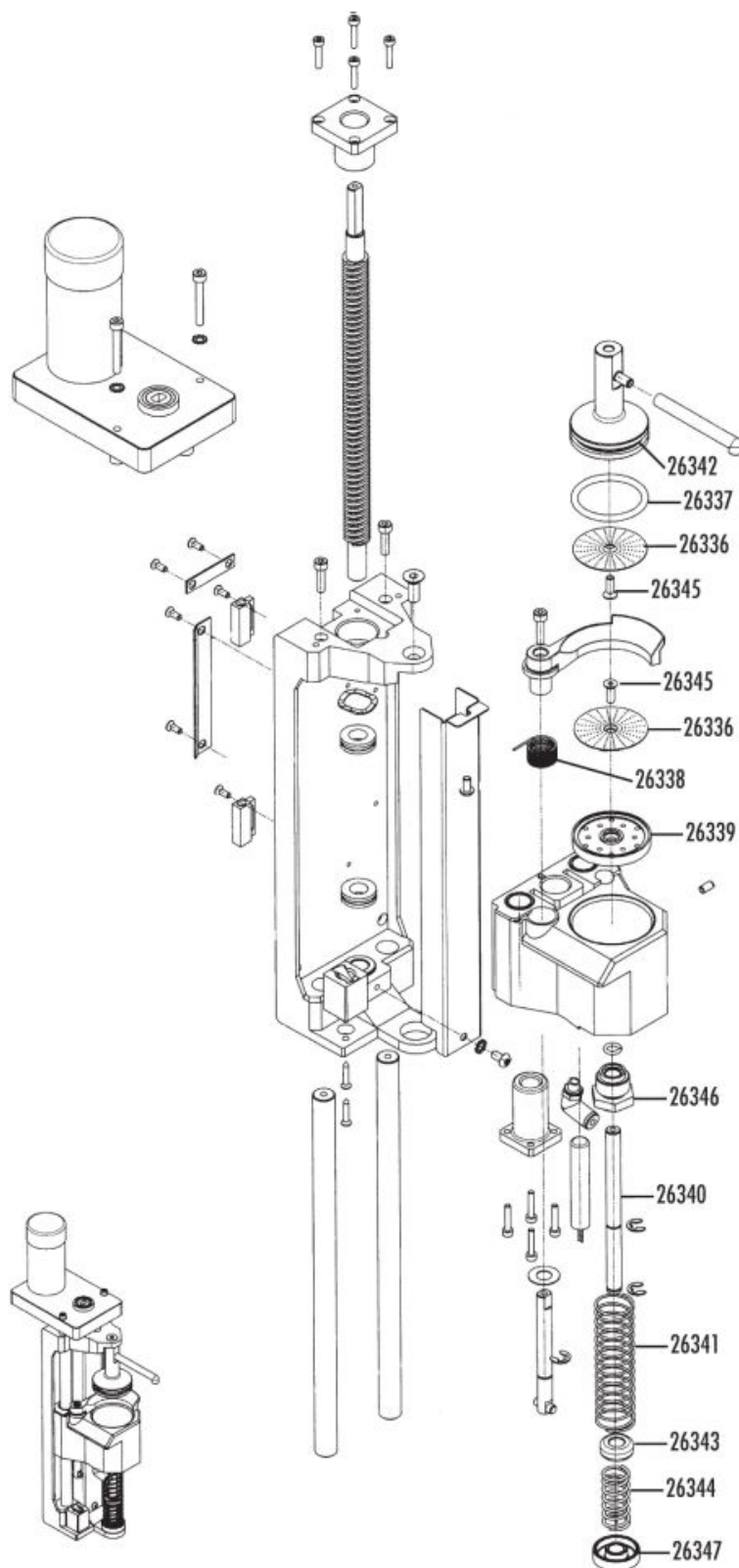
Despiece	Marca
MICROBAR - CARROCERIA	NUOVA SIMONELLI



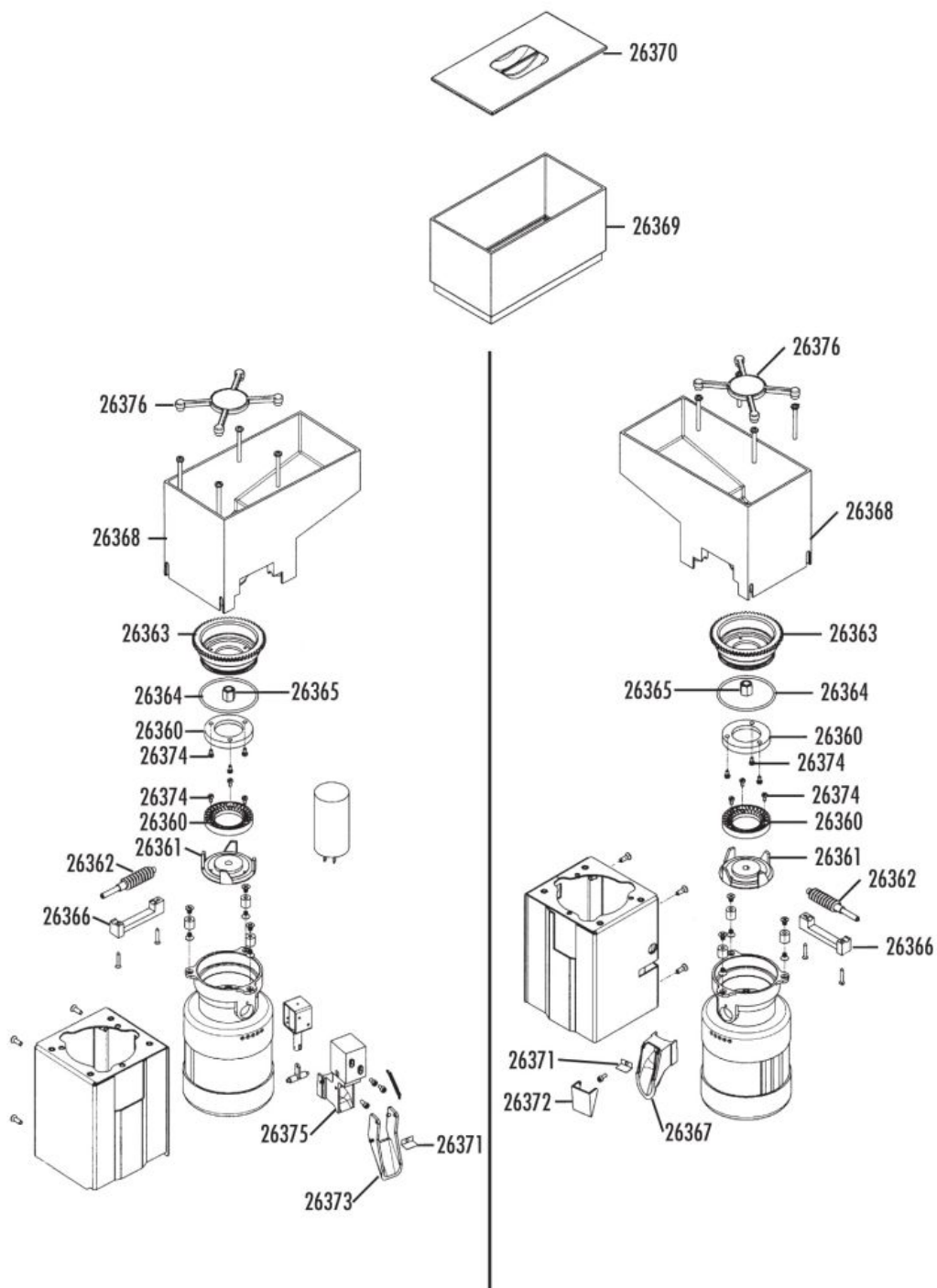
This exploded view diagram illustrates the assembly of a device chassis. The components and their assembly sequence are as follows:

- Top Panel:** A large, irregularly shaped metal plate with various mounting holes and slots.
- Internal Components:** A collection of small electronic components, including a microcontroller, capacitors, and resistors, which are mounted onto a printed circuit board (PCB).
- Mounting Brackets:** Two L-shaped brackets, labeled **17562**, are used to secure the internal components to the top panel.
- Side Panel:** A vertical rectangular panel, labeled **26387**, which is attached to the side of the top panel.
- Bottom Panel:** A large, rectangular metal plate with a central circular cutout and a series of ventilation slots. It is labeled **22421**.
- Assembly Process:** The diagram shows the bottom panel being aligned with the top panel and secured with screws. The side panel is then attached to the side of the top panel. Finally, the internal components and mounting brackets are installed on the top panel.

Despiece	Marca
MICROBAR - GRUPO EROGACION	NUOVA SIMONELLI



Despiece	Marca
MICROBAR - MOLINO CAFE	NUOVA SIMONELLI



Despiece	Marca
MICROBAR - PARTES ELECTRICAS	NUOVA SIMONELLI

